

GE Healthcare

# Voluson Performance Series



Extraordinary vision



healthymagination

# Your first Voluson... years in the making

Voluson\* Women's Health ultrasound has developed a strong reputation for high performance – from its exceptional 2D image quality, practical volumetric tools, and innovative probes, to the streamlined ergonomics that help drive efficient workflow.

Now those established benefits have been combined into the new Voluson Performance Series – an affordable way to acquire your first Voluson and bring the benefits of this high performance ultrasound to your patients.

An excellent entry-point to the Voluson family, a Voluson Performance Series system delivers hard-working capabilities that fit your practice, your patient base, and your budget...with an upgrade pathway that can help keep your system current for years to come.

## As easy as 1-2-3D

Hard working ultrasound capabilities – like 2D, Doppler, and 3D imaging – are just a keystroke away with a Voluson Performance system. Voluson automation advances enable busy practices to maintain high quality while reducing the time needed to conduct, analyze, and report on exams:

- **Intuitive, easy to use keyboard** – Helps achieve uninterrupted scanning
- **Auto Optimization for 2D and Doppler** – Helps enhance contrast resolution at the touch of a button
- **Auto focus for 2D** – Provides automated positioning of the focal zone and allows the user to concentrate on scanning
- **Raw data** – Conducts a virtual rescan of the patient post-exam to help increase productivity and improve diagnostic confidence
- **SonoRender Start for 3D** – Helps enhance volume rendering with a keystroke
- **Reporting and archiving tools** – Enable easy creation of a structured report including 1st trimester, 2nd/3rd trimester, and gynecology exams. You can also export a report, including charts, in PDF format at the touch of a button





Exam: OB 11/123.18 MB Voluson RAB2-6-RS/OB MI 1.2 GE Healthcare  
3D/4D Sub P8 10.9cm/1.2/67Hz Tib 0.4

Probe Orientation  
3D/4D Orientation

Gray/Tint Maps:  
A Gray 2D: 7  
B Tint 2D: Standard 2  
C Tint 3D: Sepia1

Render View Directions:  
1 Up/Down Down/Up 2  
3 Left/Right Right/Left 4  
5 Front/Back Back/Front 6

X SRI 3D 3  
Q SRI 3  
F 3D Frame

Exit

Gray 3D 15 / -10 Backgr. 0 Change  
RefImg. B Curv. ROI

Skeleton™  
Th77/Qual high2-  
B547/V65°  
Mix30/70°  
SRI 3D 3.  
3D Static

Voluson P8

# A system designed for ease of use and comfort

+ **15-inch, flat-screen LCD monitor** moves independently of the console

+ **Wireless connectivity** enables efficient transmission of reports and images

+ **Simplified keyboard** enables exams to be completed with fewer keystrokes and rotates to adjust to the user

+ **Transducer holder** protects delicate probes while positioning them for user convenience

+ **Sleek, lightweight console** with a small footprint to help optimize use of small spaces

+ **Integrated peripherals** including a DVR module help expand functionality



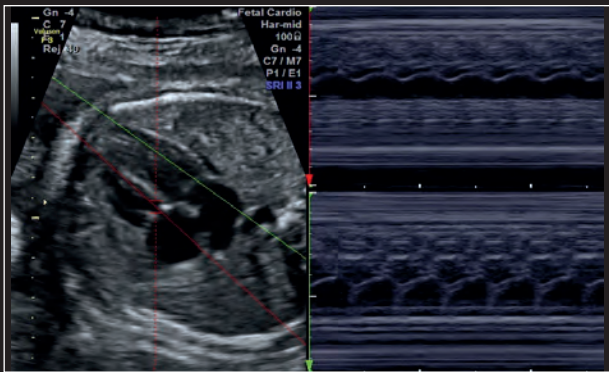


Keyboard is designed for ease of use and to help reduce user fatigue by helping to reduce reaching.

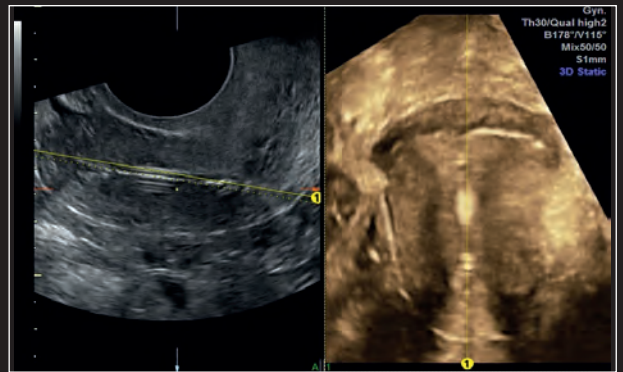
- 1 **Trackball** is surrounded by curved set keys that help users easily navigate through exams and make selections
- 2 **One touch auto optimization** for 2D and Doppler
- 3 **SonoRender start** helps enhance volume rendering with a keystroke
- 4 **Measurement button:** Easy access to measurements
- 5 **3D/4D button:** Easy Voluson 3D imaging
- 6 **Rotary knob:** Easy navigation through on-screen menus
- 7 **DVR button:** One touch streaming recording of the exam to the integrated DVR
- 8 **Report button:** Export reports in PDF format at the touch of a button
- 9 **Zoom:** Easily localize regions of interest for closer study with HD-Zoom
- 10 **Probe button:** Access wide sector functionality for endocavitary probes



Easy Voluson workflow



Fetal heart with Anatomical M-Mode, using the RAB2-5-RS probe.



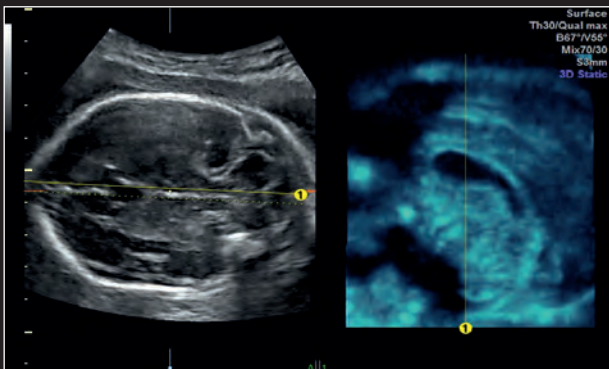
Uterus with an IUD shown in 3D using the RIC5-9W-RS probe.



3D fetal face for increased clinical confidence using the RAB2-5-RS probe.



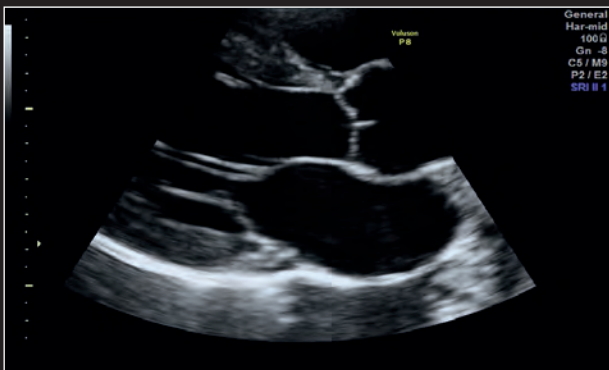
2D view of nose and lips using the RAB2-5-RS probe.



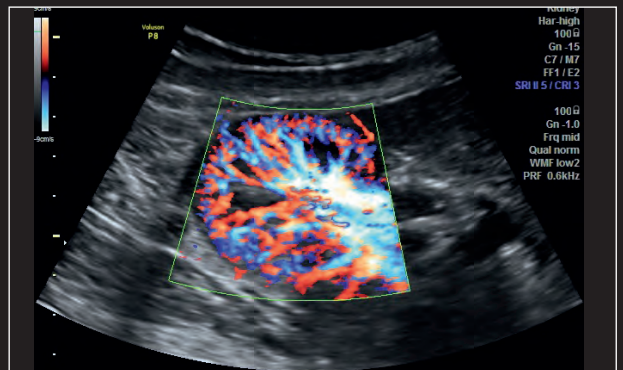
Corpus callosum with RAB2-5-RS probe using SingleView.



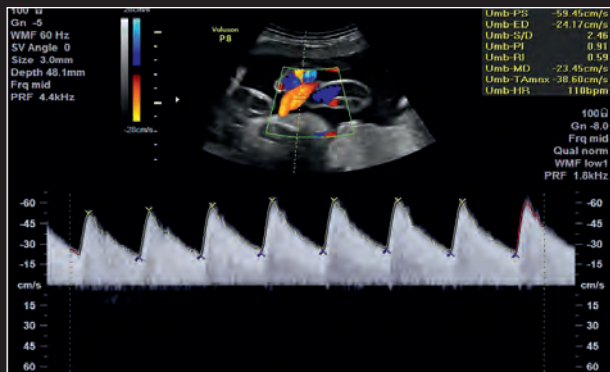
2D image of the uterus using RIC5-9W-RS and wide sector.



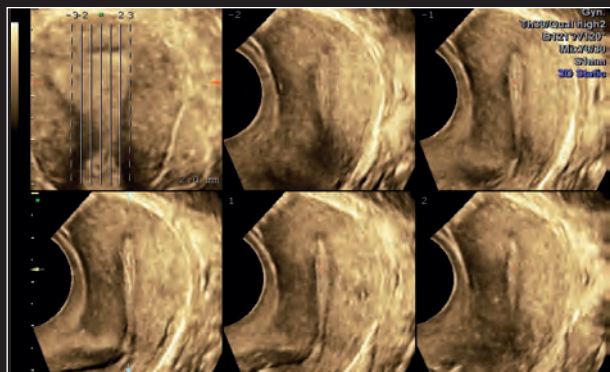
Cardiac view shown using PLAX view 3Sc-RS probe.



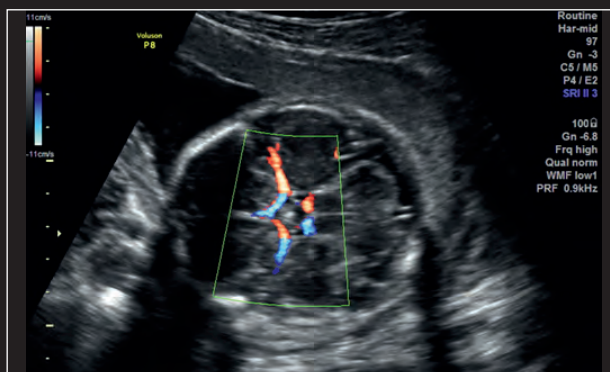
Kidney with HD-Flow\* using the 4C-RS probe.



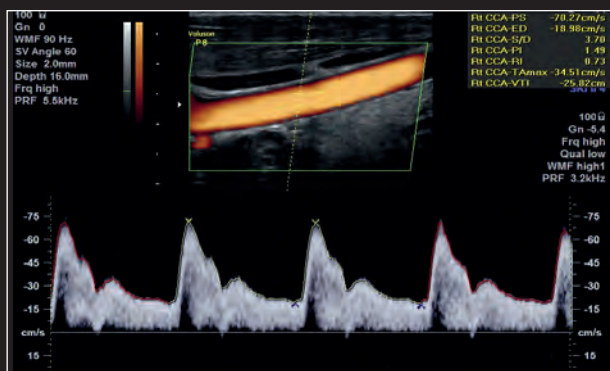
Doppler measurement of the UmA with Auto Trace function using the RAB2-5-RS probe.



Uterus shown with TH using the RIC5-9W-RS probe.



Circle of Willis shown using HD-Flow.\*



Carotid artery with PF and spectral Doppler, using the 12L-RS probe.

## Image quality you can rely on

Voluson technology has established a high standard for 2D and 3D imaging – the Performance Series continues the tradition.

You can count on exceptional images in all applications, from routine OB evaluations and gynecological studies to cardiac, abdominal, vascular, and small parts scanning. Innovative GE tools include:

- **SRI (Speckle Reduction Imaging)** – Helps improve visualization and contrast resolution by reducing intrinsic artifacts
- **HD-Zoom** – Helps users localize regions of interest for closer study
- **CrossXBeam<sup>CR</sup>\*** – Helps enhance tissue interfaces and border differentiation
- **Wide range of 2D and 3D probes** are available for us in most applications:
  - **Wide sector for endocavitary probes** – Enables more anatomical information to be displayed in a single image versus the standard field of view



## Join the Club. VolusonClub.

### Our relationship promise to you:

We are committed to providing you with technology and support which truly meets your needs...all at an affordable price.

- Online remote support
- Education and training
- Finance solutions
- Responsive on-site service
- Probe protection

**VolusonClub** is an online community of Voluson users that can help you experience the full diagnostic power of your Voluson ultrasound.

Online materials can help you enhance your knowledge of system operation and teach you techniques to help improve your productivity. Club members also can interact with other Voluson users, receive communications and access a wide library of Voluson specific materials.

Joining is easy, visit [www.volusonclub.net](http://www.volusonclub.net).

For more information please contact your GE Healthcare sales representative.

GE Healthcare GmbH  
Beethovenstr. 239  
42655 Solingen, Germany  
T 49 212-28 02-0  
F 49 212-28 02-28

[www.voluson.gehealthcare.com](http://www.voluson.gehealthcare.com)

**UNITED KINGDOM**  
GE Medical Systems Ultrasound  
71 Great North Road  
Hatfield, Hertfordshire  
AL9 5EN  
T 44 1707 263570  
F 44 1707 260065

**AMERICAS**  
GE Healthcare  
9900 West Innovation Drive  
Wauwatosa, WI 53226  
U.S.A.  
T 1 888 202 5582

**APAC**  
GE Healthcare Asia Pacific  
4-7-127, Asahigaoka, Hino-shi  
Tokyo 191-8503 Japan  
Tel: +81 42 585 5111

**ANZ**  
Tel: 1300 722 229 (Australia)  
Tel: 0800 434 325 (New Zealand)

**ASEAN**  
Tel: +65 6291 8528

**Korea**  
Tel: +82 2 6201 3114

©2012 General Electric Company – All rights reserved.

General Electric Company reserves the right to make changes in specifications and features shown herein, or discontinue the product described at any time without notice or obligation. Contact your GE Representative for the most current information.

GE, GE Monogram, and Voluson are trademarks of General Electric Company.

GE Medical Systems Ultrasound & Primary Care Diagnostics, LLC, a General Electric company, doing business as GE Healthcare.

\* Trademark of General Electric Company.



GE imagination at work

ecomagination<sup>SM</sup>

healthymagination