

SonoScape

Caring for Life through Innovation



Company profile

Since the establishment, SonoScape has committed to provide high standard medical equipments for healthcare of human beings. Nowadays, we are specialized in manufacturing and developing ultrasound systems and transducers. It is our faith to supply customer-focused and reliable equipments for all clinics and hospitals.

Sonoscape has proudly introduced the world's first 15 inch LCD color HCU, and a lot of other high performance ultrasound systems and transducers. We will strive to provide the equipments with optimal price and state-of-the-art technology for clinical application, diagnosis and treatment.



Quote from the analyst of

FROST & SULLIVAN

"SonoScape Co. Ltd. has exhibited exceptional entrepreneurial capabilities in developing S8 - the portable colour Doppler System. The advanced 4D capabilities of the ultrasound unit are customised for the high-end European market and yet available at much affordable prices. The company's priority in maintaining high levels of quality in its product lines is well supported by the negligible after-sales costs associated with its ultrasound systems. Also with the launch of SSI-1000, the hand carried ultrasound with multiple clinical applications; SonoScape has made significant strides towards establishing itself as a global medical equipment manufacturer."

Mr. Krishanu Bhattacharjee

Company Milestone



- 2002: Company Founded
- 2003: Released 1st 15" LCD Portable Color Doppler system in the world
- 2004: Released 1st PC platform Color Doppler system in China
- 2005: Awarded as the High Technology Company by the government
- 2007: Awarded as "CHINA TOP BRAND" in the Medical Equipment Industry
- 2007: Released 1st Real time 4D technology in China
- 2008: Awarded by FROST & SULLIVAN "European Entrepreneurial Company 2008"
- 2008: Awarded as the "Flagship Company" in the Medical Equipment Industry in China
- 2009: Awarded by FROST & SULLIVAN "Product Quality Leadership Award 2009"
- 2011: Awarded as "reddot design award winner 2011"



ISO 13485



SonoScape

Yizhe Building, Yuquan Road, Shenzhen, 518051, China

Tel: 86-755-26722890 Fax: 86-755-26722850

E-mail: sonoscape@sonoscape.net www.sonoscape.com



S20

Touching Your Needs
with Optimum Solutions



S20 Touching Your Needs
with Optimum Solutions

S20, the newest color Doppler system from SonoScape, is specially designed for full range applications, including Radiology, Cardiovascular, OB/GYN and others. This system is featured with innovative ergonomic designs, latest ultrasound technologies. As a workflow-enhanced ultrasound systems, S20, combining 17" monitor with touch panel together, will provide the most smoothly work flow which doctors have never experienced before. The high definition image quality is another strength for S20.

Thanks to the innovative technologies, such as Multi-beam processing and μ -scan, doctors will be confident for diagnosis, even the most difficult patients. So, from technology to imaging, from archiving to reporting, the S20's innovation will bring all the best for clinical practices in every clinical practice.

SonoScape Wins
Red Dot Design Award
for S20 Cart-based
Color Doppler System



reddot design award
winner 2011

S20 acquired recognition from the expert jury by its user-friendly ergonomic designs such as smart touch screen, intuitive operation interface, omni-directional arm and slim building, and its excellent performance in imaging and image-processing.

Powerful Imaging Technology

High Quality Noise Filter

HQNF technology can efficiently reduce Doppler signal noise of ultrasound system, providing improved color flow and spectral Doppler images.

Multi-beam Parallel Processing Technology

Multi-beam parallel processing technology can enhance lateral and time resolution, so that it can dramatically help the diagnosis of cardiovascular disease and also lays a good foundation on real-time 3D imaging.

Stress Echocardiography

Stress echocardiography is the combination of 2D echocardiography with physical or pharmacological stress. It can determine how the heart muscles respond to stress, mainly used to diagnose and evaluate coronary heart disease.

μ-Scan

μ-Scan uses real-time image processing algorithm to eliminate speckle and noise artifact, enhancing tissue margins and borders by correcting discontinuity between different regions allowing improved visualization of real tissue information.

M-tuning

M-tuning is one button image optimization technology, providing you quick B-mode and Spectral Doppler image optimization by clicking one button. It can shorten examination time and ensure optimal results and more accurate diagnosis.

Real-time 3D(4D)

This premium technology is often used in obstetric ultrasonography, providing real time three dimensional images of the fetus. Many high-end features, such as multi-slice and clip plane, will help you make detailed and accurate analysis.



Innovative Ergonomic Design

17" high resolution widescreen LCD with articulated arm to minimize the fatigue of eyes and shoulders during daily scanning.

- The large touch screen providing the fastest way to adjust parameters and control the system.
- Convenient front and back handles and four wheels with lock can be used for transportation with high mobility.
- Standard four sockets are universal for all types of transducers, including the special probes like TEE, 4D, Bi-plane and intraoperative transducers.



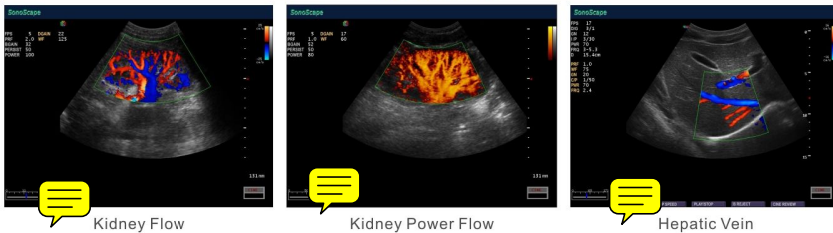
Premium Transducer Technology



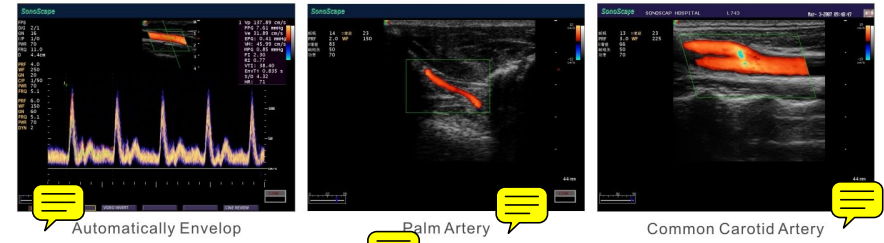
- Convex
- Linear
- Transvaginal
- Transrectal
- Micro-convex
- Bi-plane
- Phased array
- TEE
- Pediatric TEE
- Intraoperative
- Volume 4D
- Veterinary
- Steel Biopsy Kits
- Disposable Biopsy Kits

Superior Imaging Quality

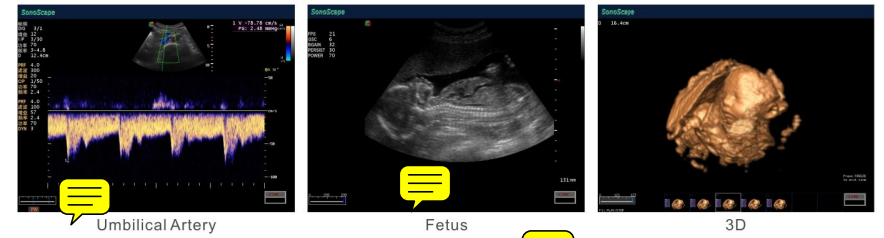
Abdominal



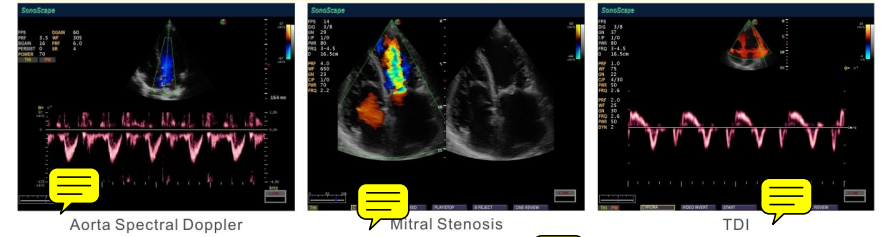
Vascular



OB/GYN



Cardiology



Small Parts

