

CHISON

Value Beyond Imaging

CE 0197



i7 New

Cardiac+4D:All-in-one





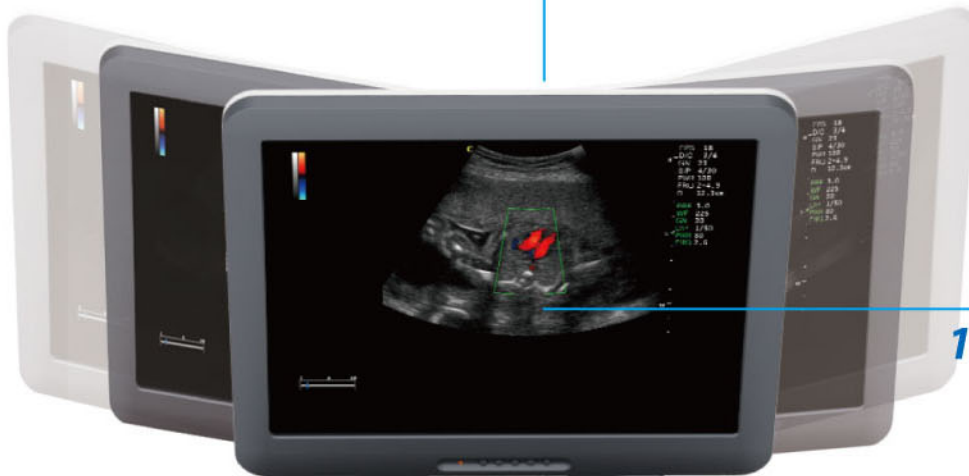
Fully equipped, Premium performance

CHISON i7 has set the new standard of a premium cardiovascular color doppler system. The unique technologies of double phase digital beam forming has tripled the the frame rate of a traditional cardiac motion image, which tremendously reduces the mis-diagnosis. The extended cardiac package offers automatic IMT trace & measurment, up to 3 lines in Free Steering M mode, TDI measurement, color M mode, and it also supports the TEE transducer which is only found in the most premium level cardiac systems.

With the elegant design of 19"LCD screen, 4 active probe connectors,ergonomic keyboard,i7 is truely an luxury experience for cardiovascular experts.



270° Rotating LCD arm



19"LCD-Larger image area

USB ports- software upgrade, data transfer and connect to printer

Intelligent control panel with back-lit keys

Swing keyboard

Removeable Dust filter

4 probe connectors- allow quick switch between different probes

Premium Cardiac

Adult MPTEE probes

The TEE probe is passed through the mouth, down the back of the throat, and into the esophagus. This allows the doctor to examine the heart and valves through a clear image of the heart since the heart and esophagus are close together, and there are no structures in between.

- Multiplane
- Small tip size for the best patient care
- Ergonomic control handle design for one-hand operation



IMT Calculation

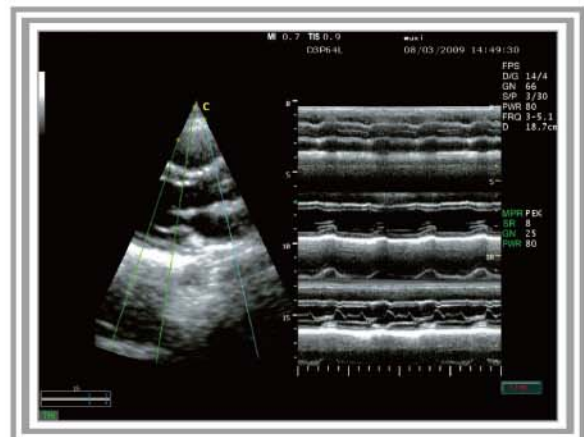
Automatically trace the intima, automatically measure the thickness of the intima.



ovascular Performance

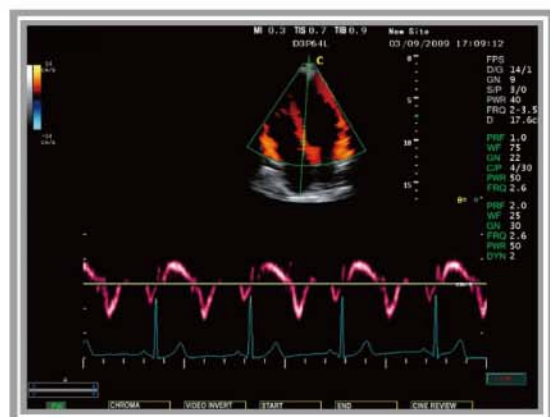
Free Steering M Mode

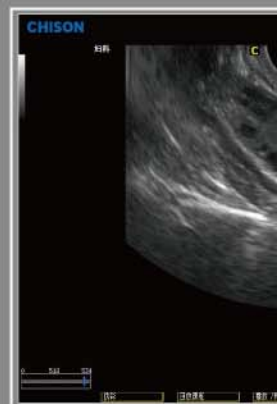
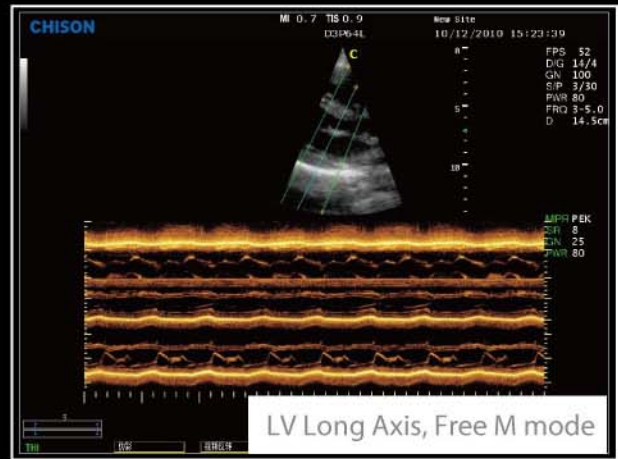
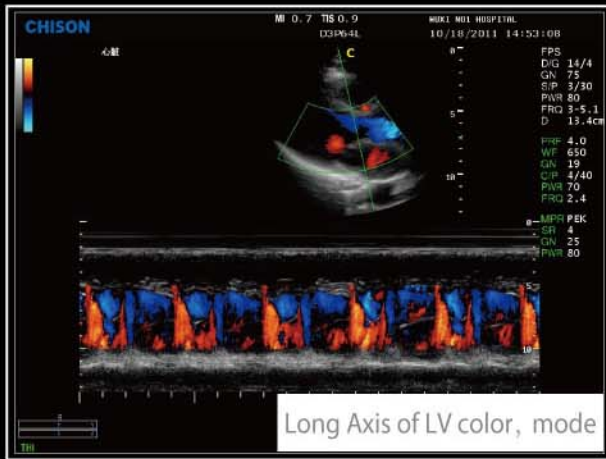
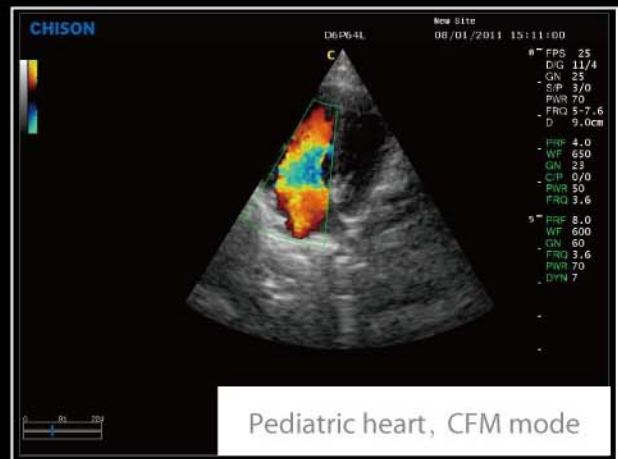
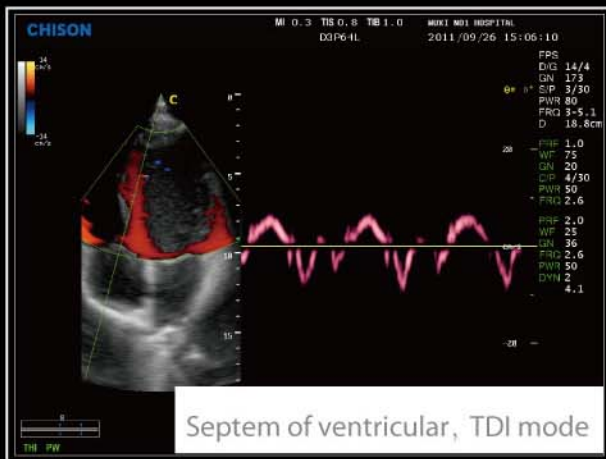
The cursor line can be rotated in 360 degree and adjusted to the position you wanted. More over, there are three cursor lines can be adjusted in same phase, which greatly enhanced the diagnostic efficiency!

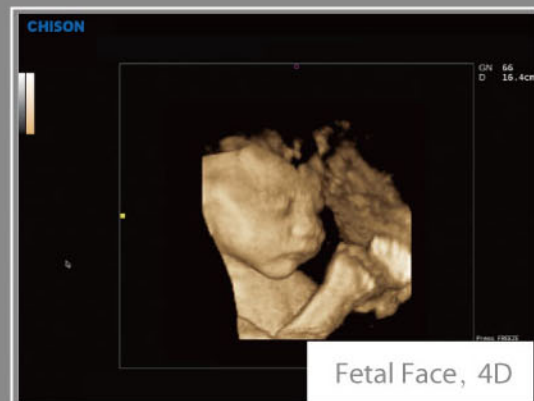
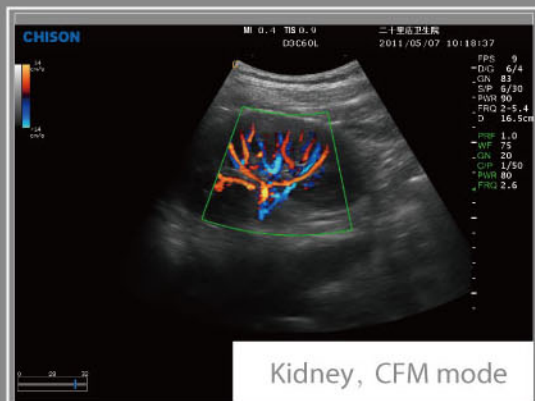
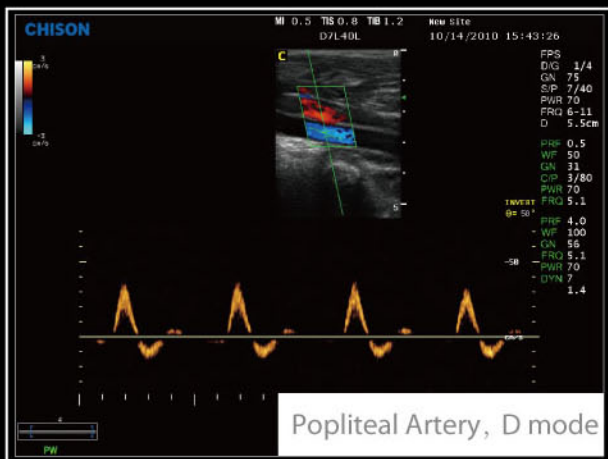
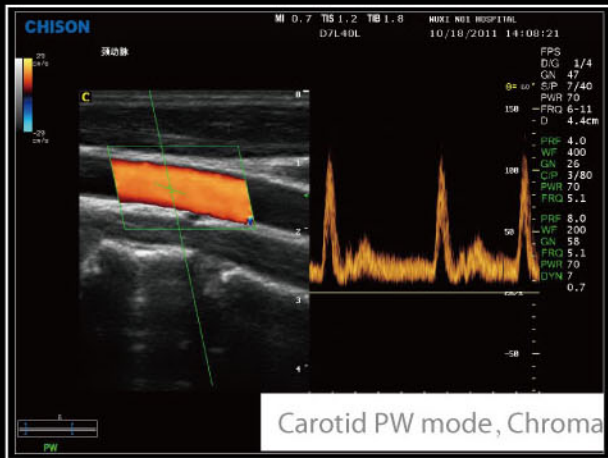
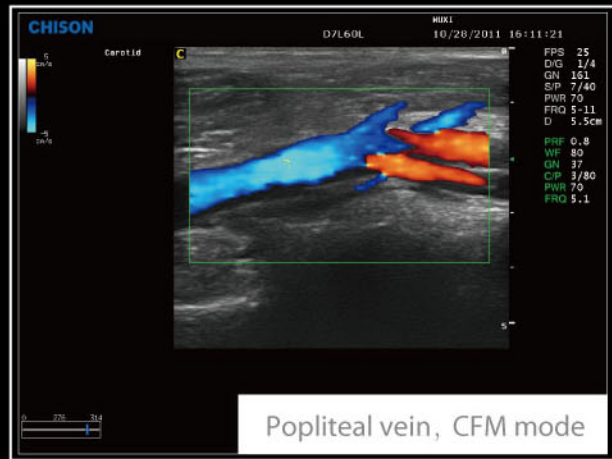


Tissue Doppler Imaging (TDI)

Tissue Doppler imaging is a novel echocardiography technique that directly measures myocardial velocity. Systolic TD measurements assess left and right ventricular myocardial contractile function. Diastolic TD values reflect myocardial relaxation.







Specifications

i7

Imaging modes:

- B,2B, 4B, B/M
- CFM, B/BC
- PW, HPRF,CW
- Power Doppler / Directional PD
- Instant Triplex, Duplex
- Trapezoidal
- Panoramic
- Free-hand 3D (optional)
- Real-time 4D (optional)
- Chroma B/PW/CW

Probe

- 3.5MHz Convex probe
- 7.5MHz Linear probe(40mm)
- 9.5MHz Linear probe(60mm)
- 6.0MHz Transvaginal probe
- 7.0MHz Transvaginal probe(180°)
- 3.0MHz Phased array probe(Adult)
- 6.0MHz Phased array probe
- 4.0MHz 4D Volume probe
- 5.0MHz TEE Probe(Adult)
- 5.0MHz Pediatric probe
- 6.0MHz Pediatric Micro-convex probe
- Wideband, Multi-frequency

Image processing technology

- THI on all probes
- Speckle Reduction Algorithm (SRA)
- Multiple Compound Imaging (MCI)
- i-Image™ (optional)
- Double Phase Digital Beam Forming(DPDBF)

Measurement & Report packages

- OB&GYN
- Cardiac

- Vascular
- Urology
- Small parts

Professional Clinical Applications

- Abdomen
- Cardiology
- Gynecology
- Obstetrics
- Urology
- Vascular and small parts
- Pediatrics
- Musculoskeletal

Standard configuration

Main unit, 19" LCD monitor, 4 probe connectors, Hard disk(320GB), DVD-RW, 6 USB Ports

Options

- 3.5MHz Convex probe
- 7.5MHz Linear probe(40mm)
- 9.5MHz Linear probe(60mm)
- 6.0MHz Transvaginal probe
- 7.0MHz Transvaginal probe(180°)
- 3.0MHz Phased array probe(Adult)
- 6.0MHz Phased array probe (Pediatric)
- 5.0MHz TEE Probe(Adult)
- 5.0MHz Pediatric probe
- 6.0MHz Pediatric Micro-convex probe
- 4D package: including 4.0MHz 4D volume probe, 4D software and 4D hardware Module
- TSS
- Extended Cardiac Package: ECG, Free Steering M, CW, Color M,TDI,IMT
- PC Printer & Video Printer
- DICOM3.0

CHISON MEDICAL IMAGING CO., LTD.

Imported and distributed by

Integrated Healthcare Solutions

Via Giacometti, 1 - C.P.5101, Switzerland - 6901 Lugano

Ph: +41 919249416 - Fax: +41 919232261

e-mail: info@ihs-sa.com



IHS

Integrated Healthcare Solutions

Experiencing innovation

www.ihs.com

