



New

CHISON Q5

4D Portable Color Doppler Ultrasound



CHISON
Value Beyond Imaging

CHISON Q5



CHISON Q5 delivers superb image quality for multi-applications in abdomen, OB/GYN, small parts, urology and MSK. With the advanced technologies of SRA, THI, it provides better contrast resolution, which greatly helps the diagnosis of difficult-to-scan patients.

A work-flow oriented User Interface is built to allow user-friendly operation with minimum soft key entries. Ergonomical design of keyboard, 15 inch LCD large display, double probe connectors, USB and DICOM connectivity make your scan FAST and EASY, and allow you to focus more on your patients.

"4T"-Unique &

Dedicated design



Light

Light probe
Releases doctors from
scanning fatigue

Smart

Smart function
The latest technologies:
compound, i-Imag™, SRA, etc.
provide super image

Quiet

Quiet probe
Vibration-free & Noise-free
probe allows better
care for mother and fetus

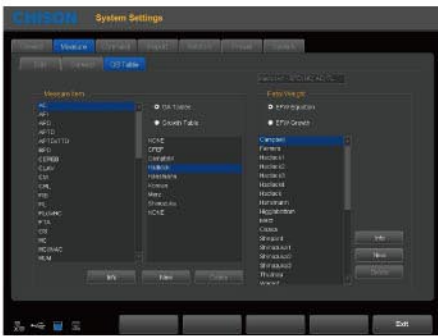
Fast

Fast speed
4D volume rate reveals
fetal movement in real
time

4T

Streamlined Workflow

The multi-purpose user presets, comprehensive measurement & report system, built-in EasyView image archive system, quick image storage/retrieve/transfer, one-button direct print, 4D direct burning to CD makes the complete workflow better than what you can dream of.



Various Measurements



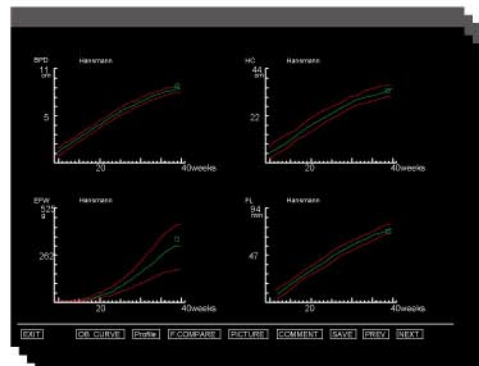
Detailed Reports



EasyView™ image archive system

Built-in report system

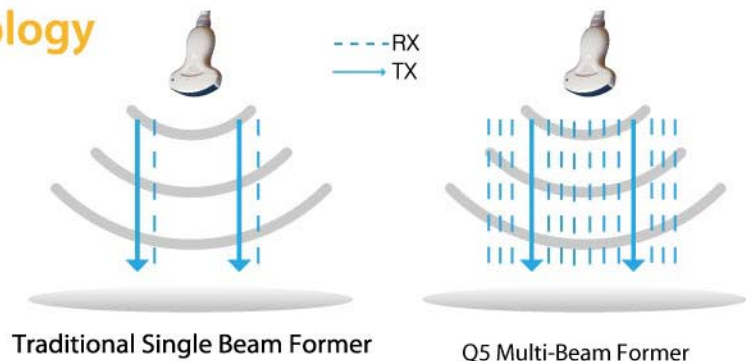
Multiple fetation report and intuitionistic fetal growth curve graphs are included in OB report package



Advanced technologies

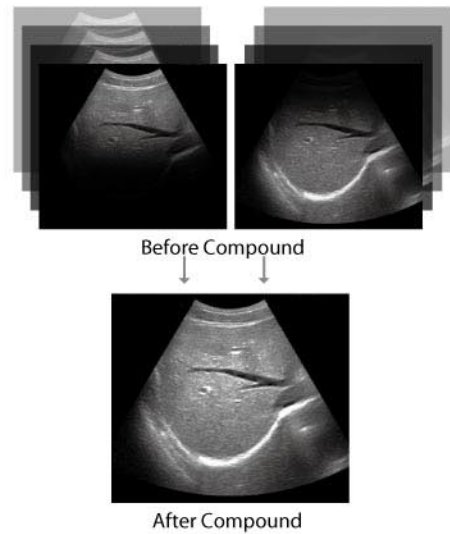
Multi-Beam Former Technology

- Enhance Frame rate
- Improve image resolution



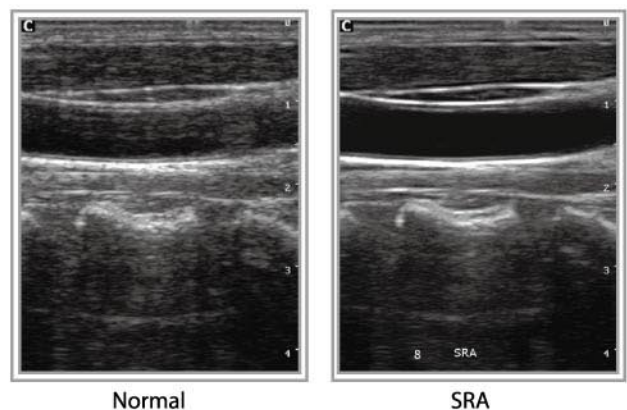
Compounding Technology

The traditional Compound imaging technologies improve the image quality, but lose the frame rate, which affect diagnosis convenience and efficiency. Our Compound imaging has intergrated multiple key factors like frequency, focus and time, but will not sacrifice the frame rate.



Speckle Reduction Algorithm (SRA)

SRA is the technique that uses a variety of denoising algorithm to suppress speckle, smooth the tissue images, and make the faint edge more appearing.



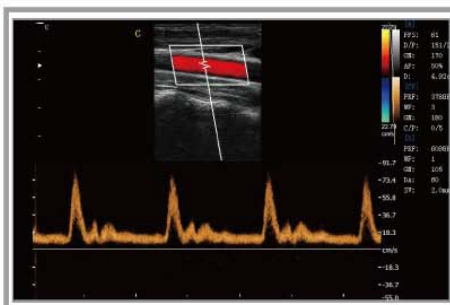
Premium Images



Fetus, 18 Weeks



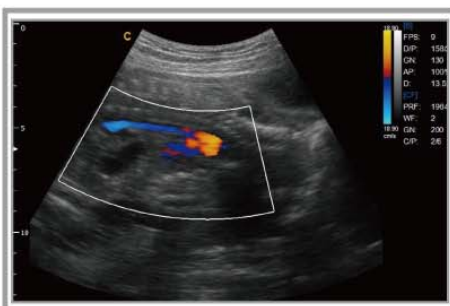
Fetal Face, 26 Weeks



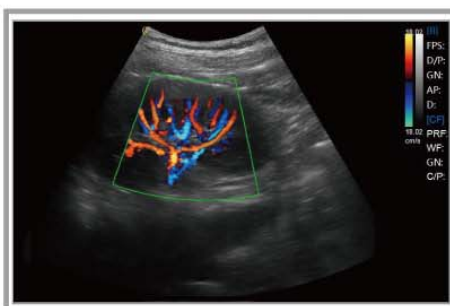
Carotid Artery, D Mode



Follicles Monitor after therapy



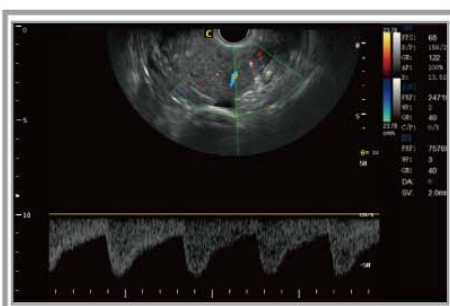
Aorta of fetus, CFM Mode



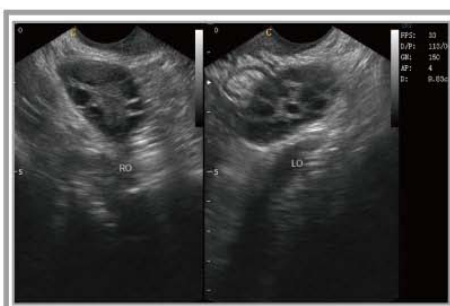
Kidney, C Mode



Fetal Spine, B Mode



Hysteromyoma, D Mode



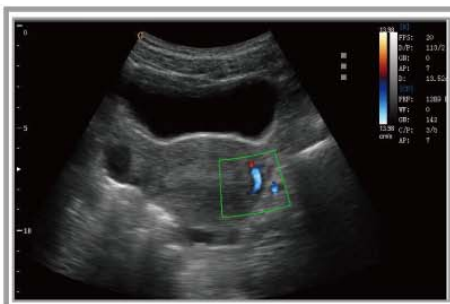
Polycystic ovary syndrome



Fetal profile, B Mode



Lymphoma, B Mode



Uterus, C Mode

CHISON Q5

4D Portable Color Doppler Ultrasound

Compact In Size Powerful Inside



Two Probe Connectors



USB, DICOM



15"LCD

Specifications

Imaging modes

- B, 2B, 4B, B/M, M
- CFM
- PW Mode
- Power Doppler / Directional PD
- Duplex
- Trapezoidal
- Real-time 4D (Option)
- Chroma B/PW

Probes

- 3.5MHz Convex probe
- 7.5MHz Linear probe
- 6.0MHz Transvaginal probe
- 4.0MHz 4D Volume probe
- 7.0MHz Transvaginal probe(180°)
- 3.0MHz Micro-Convex probe (adult Cardiac)
- 5.0MHz Pediatric probe
- Wideband, Multi-frequency

Image processing technology

- THI on convex probe
- Speckle Reduction Algorithm (SRA)
- Compound technology
- i-Image™: image optimization software

Measurement & Report packages

- OB&GYN
- Vascular
- Urology
- Small parts
- Basic cardiac

Professional Clinical Applications

- Abdominal
- Obstetrics
- Gynecology
- Vascular and Small parts
- Pediatric
- Urology
- Musculoskeletal

Standard configuration

Main unit, 15" LCD, 2 probe connectors, Hard disk, 2USB ports, Video out, TV out, LAN port, VGA out

Options

- 3.5MHz Convex probe
- 7.5MHz Linear probe
- 6.0MHz Transvaginal probe
- 7.0MHz Transvaginal probe(180°)
- 3.0MHz Micro-Convex probe (adult Cardiac)
- 5.0MHz Pediatric probe
- 4D package: including 4.0MHz 4D volume probe, 4D software and 4D hardware module
- Video Printer: SONY UP897MD
- PC Printer (any type)
- DICOM 3.0
- i-Image™: image optimization software
- Biposy kit: for convex, linear, TV probe
- Foot-switch



3.5MHz Convex
D3C60L



7.5MHz Linear
D7L40L



6.0MHz Transvaginal
D6C12L



4.0MHz 4D Volume
D4C40L



7.0MHz Transvaginal
D7C10L(180°)



3.0MHz Micro-Convex
D3C20L



5.0MHz Pediatric
D5C20L

CHISON MEDICAL IMAGING CO., LTD.

Factory Address:

NO.8, Xiang Nan Road, Shuo Fang, New District, Wuxi, Jiang Su Province, CHINA 214142

Sales & Service Contact Address:

No. 9 Xin Hui Huan Road, New District, Wuxi, Jiang Su Province, China 214028

TEL: 0086-510-85310593 / 85310937 FAX: 0086-510-85310726 EMAIL: export@chison.com.cn

We reserve the right to make changes to this catalogue without prior notice
Please contact our local dealer for the latest information.