

The Veterinarian's **Choice**

Gamma



Six



Compact & Complete

MyLabGamma Mobile



Features

- 2 transducer connectors
- 13.3" 90° rotatable widescreen monitor
- Anti-theft security lock
- Long lasting / fast charging battery
- Weight: 7.3 kg (including battery)
- Compact trolley with 2 extra transducer connectors
- Trolley for mobile services
- 15 seconds battery based start-up time



Patient ID/Owner Name

The patient demographic screen is dedicated to the veterinary environment with fields for the animal's name as well as species and breed.



Application Selection

The veterinary application software makes it easy to choose from a list of applications before starting the examination. After selecting the application, the system automatically displays the presets corresponding to the chosen purpose. A dedicated application icon is shown on the screen, confirming that the correct settings are selected.



Measurements and Reports

Confirming Esaote's dedication to the veterinary world, complete veterinary measurement packages, including abdomen, cardiology and reproductive gestational calculations provide easy exam documentation.



Body Marks

Using a body mark to show the exact position where the scan has been done is useful. But being able to indicate this with a body mark that actually resembles the scanned species is even better. During or after an exam or measurement it is very easy to "mark" the exact field of examination using the dedicated veterinary body marks.



Image Quality

With both Esaote systems, in any application and with any probe, you can rely on excellent image quality to aid fast and accurate diagnosis.

The MyLabGamma and the MyLabSix are based on the same technology platform. Esaote offers the best solution for any situation; the MyLabGamma as a lightweight portable for mobile use, or the MyLabSix for more stationary use. Both systems can cover all examination needs in your practice; any species and every application, from small to large dogs, cats, exotics to equine and farm animals. From abdominal imaging, reproduction, musculoskeletal to cardiology and advanced cardiology.

Office MyLabSix



Modularity

Both systems can be configured to your needs. The base is the B/W version with the OPUS SC3123 Micro Convex transducer. Optional standard transducers are available; the systems can even grow in terms of quality with the extended licence transducers and in terms of functionality (Advanced Cardiology) with the Phased Array transducers. Doppler and Color Doppler are additional options to ensure optimal modularity for every need.



MyLab™Desk³

With MyLab™Desk³ installed on your PC you can easily copy your total archive from the ultrasound system onto standard PC's for convenient reviewing and image processing.



Wireless Windows® and DICOM Connectivity

Both systems are designed for limitless wireless connectivity and can be easily implemented in any Windows® or DICOM environment. Being equipped with wireless connectivity, easy networking, printing and communication with external PC's are just one click away.



Remote Trouble Shooting and Services

Your system will be recovered in the shortest time possible. Connected to the internet, Esaote's Service Team can easily troubleshoot any issues, perform proactive maintenance and monitor performance.



Features

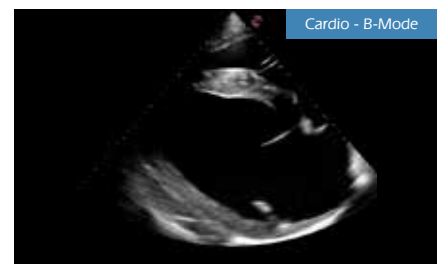
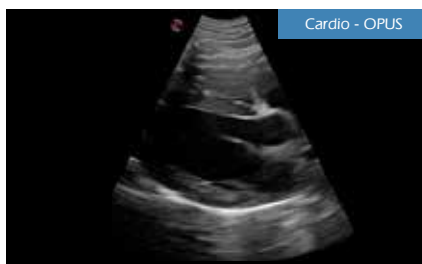
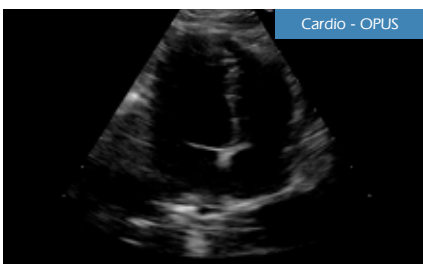
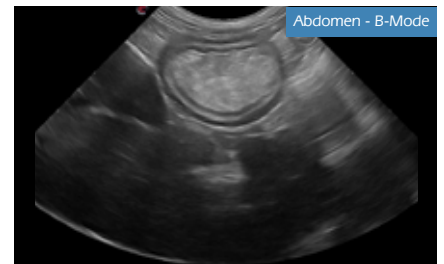
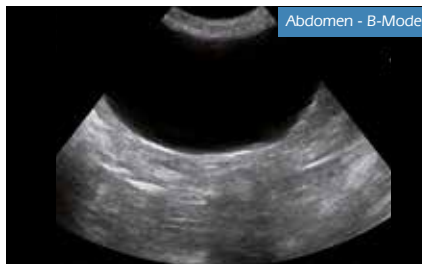
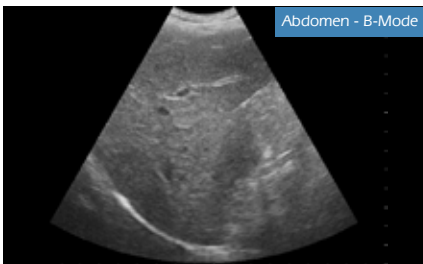
- 3 transducer connectors
- 19" rotatable widescreen monitor
- Transducer cable organiser
- Storage shelf
- Four 360° rotatable wheels
- Height adjustable rotatable keyboard

Small Animals



Excellent image quality

MyLabGamma as well as MyLabSix provide impressive image quality in a wide range of applications. Besides B-Mode, M-Mode and Doppler-Imaging, the systems offer multiple advanced technologies to meet every clinical need.



For over 30 years, Esaote has been the market leader in meeting the imaging needs of the veterinarians in their daily practice. Full dedicated functionality, high image quality and easy operation are the key attributes. Both the MyLabSix and the portable version MyLabGamma are designed to fulfill the small animal veterinarian's expectations.

OPUS

One Probe Ultrasound Solution



SC3123 Micro Convex Probe

This unique micro convex transducer has a frequency range from 9-4 MHz and a scan-angle up to 93° for high resolution and high penetration to cover all applications in daily practice.

Standard Transducers



SL3323

MSK in dogs and cats and general imaging of exotics

- 13-6 MHz
- 40 mm



SL1543

MSK in dogs and cats and general imaging of exotics

- 13-4 MHz
- 47 mm



SC3421

General imaging in large dogs and large sized exotics

- 7-3 MHz
- Up to 83° scan angle

Extended Transducers



AC2541

Abdominal imaging, large dogs and large sized exotics

- 8-1 MHz
- Up to 63° scan angle



SP2730

Low frequency phased array transducer for advanced cardiac examination in larger animals

- 5-1 MHz
- Up to 87° scan angle



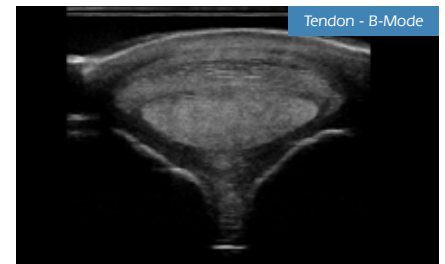
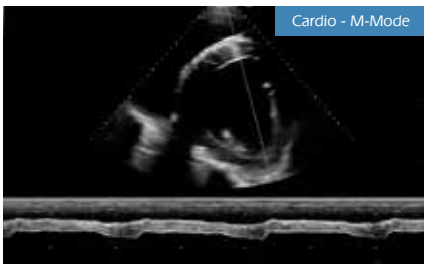
P3-11

Mid/high frequency phased array transducer for advanced cardio examination in mid- and small sized species

- 11-3 MHz
- Up to 89° scan angle

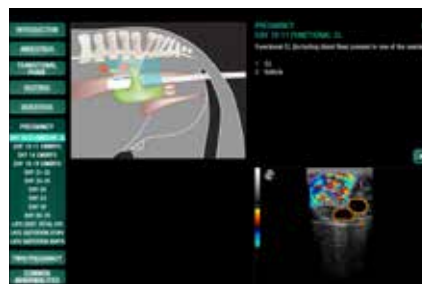
Biopsy guides are optional available for all relevant transducers

Equine & Farm Animals



Libraries^(*)

MyLibrary is an innovative application dedicated tool integrated in both systems for users' reference, which includes anatomical atlas and "How to do" reference images, so users can instantly and easily have access to a fast, thorough and application specific educational environment.



(*) Work in progress. (Contact your local representative for more information).

The MyLabGamma and MyLabSix cover all possible equine and farm animal applications. Specific transducers are available for reproduction scanning, tendons and ligaments, cardiac and for general imaging. The unique libraries, supporting the equine reproduction and tendon scanning confirm Esaote's commitment and leadership.

Veterinary Endo Rectal Transducer



Veterinary Endo Rectal Transducer (SV3513)

The famous Esaote Veterinary Endo Rectal transducer has a proven reputation based on image quality, reliability, ergonomic design and durability (10-5 MHz; 50 mm).

Standard Transducers



SL3323

The ideal tendon transducer

- 13-6 MHz
- 40 mm



SL1543

Tendons and ligaments for the demanding specialist

- 13-4 MHz
- 47 mm



SC3123

Specific transducer for hoof and pastern scanning

- 9-4 MHz
- Up to 93° scan angle



SC3421

The ideal transducer for trans abdominal reproduction scanning, general imaging and MSK

- 7-3 MHz
- Up to 83° scan angle

Extended Transducers



AC2541

Trans abdominal reproduction scanning, general imaging and MSK

- 8-1 MHz
- Up to 63° scan angle



SP2730

Low frequency phased array transducer for advanced cardiac examination in equine and large animals

- 5-1 MHz
- Up to 87° scan angle

