

MyLabTMSeven

Productivity in Real-time

Seven

"Excellence is doing a common thing in an uncommon way"

Albert Einstein

The logo for esaote, featuring a stylized 'e' in a circle followed by the word 'saote' in a bold, red, sans-serif font.

More in Less

Wide format new generation
16:10 LCD monitor
with articulated arm

High Definition
and large sized
touch-screen

Simple Control Panel
and easy access
to main functions

Illuminated
alphanumeric
keyboard



MyLab[™]Seven



Esaote introduces MyLab[™] Seven, the new ultrasound system designed around Esaote's innovative new Productivity-Oriented Platform (POP).

MyLabSeven is an innovative ultrasound system able to deliver high-class performance and compact size.

The wide 16:10 LCD monitor and large sized high-definition touch-screen reflect the main philosophy of the system: Productivity in Real-time, means better diagnosis in less time.

MyLabSeven also includes built-in wireless access to provide easy and fast data transfer. This leads to an improved user comfort and clinical outcome as well as department throughput and efficiency.

MyLabSeven is the right choice to drive healthcare innovation.

esaote

Ergonomics

- Wide image size
- Articulated monitor arm
- Easy rotation and height adjustment
- Sliding alphanumeric keyboard



Simplicity

MyLabSeven

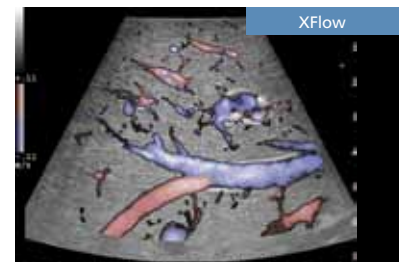
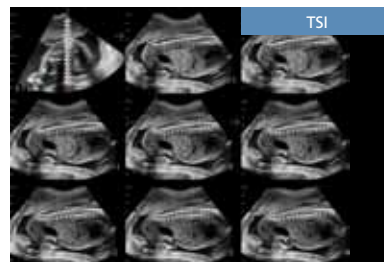
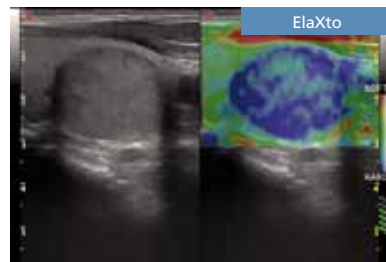
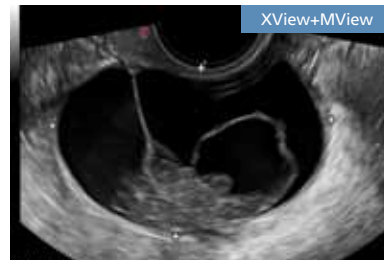
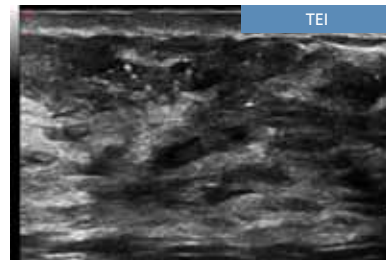
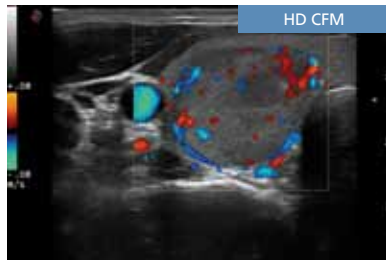
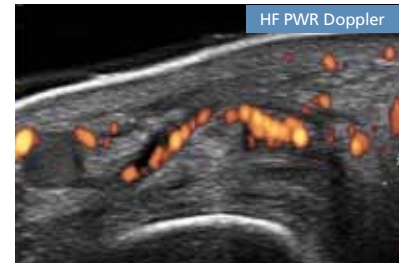
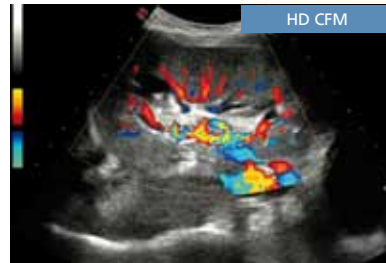
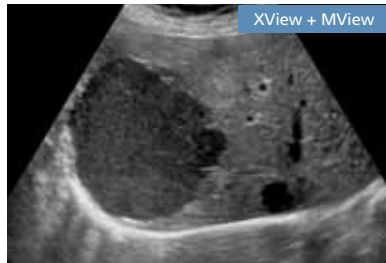


- Designed for productivity
- 4 probe connectors
- Wide range of transducers (2D, 3D)
- Compact footprint and easy mobility
- Stand-by battery

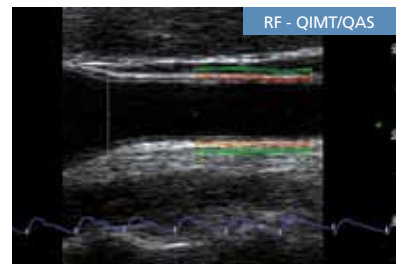
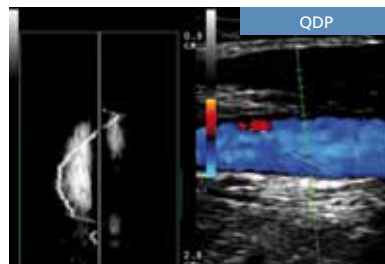
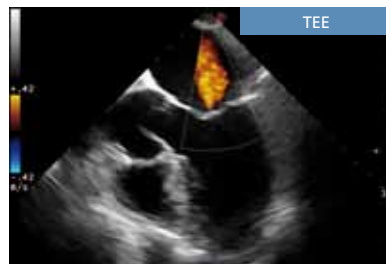
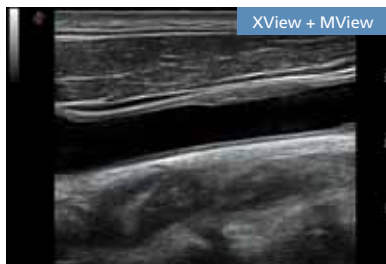
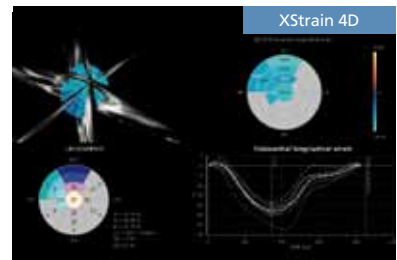
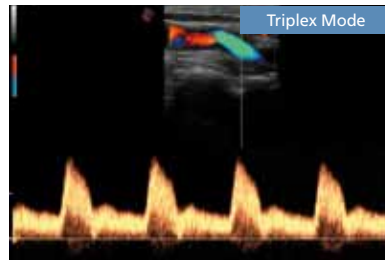
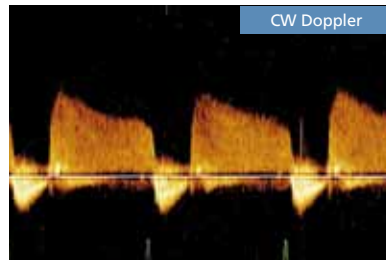
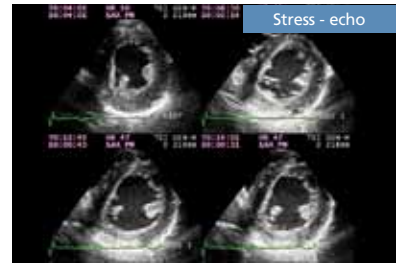
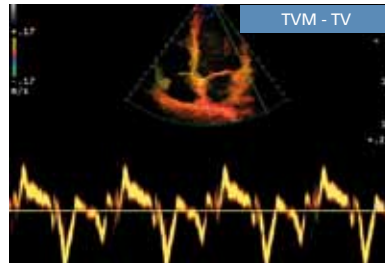
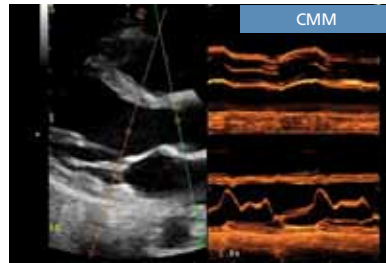
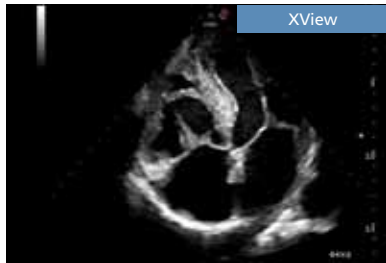


esaote

Stunning Images within reach



improve diagnostic confidence





Your @Touch



A standard ultrasound system becomes a personal application-specific diagnostic tool.

Customized settings and multiple functions can be organized according to clinical practice and preferences and then easily recalled by just pressing a button.



Unparalleled throughput

MyLabSeven™

The intelligent software and the large sized touch-screen allow unique features to be delivered with MyLabSeven. The Productivity-Oriented Platform is the core of the architecture: easy access, personalized settings and functions, standardized clinical protocols and immediate settings.

Custom setup

By pressing the **@Touch** button, the user can display the controls and functions that he really needs in clinical practice: improved comfort and reduced examination time.

MyMacro

@Touch dedicated session allows the user to record different macros. Based on any single user's needs and preferences, multiple functions can be included with just one touch: less keystrokes and faster diagnosis.

SmartTouch

Wide ranging image settings, user preferences and clinical targets, normally require time and attention. Smart-touch delivers dedicated settings for any anatomical district. Optimal images are displayed with just one touch.



iQProbes

- Active Matrix Composite Material
- Multiple Adaptive Layers
- Bi-Con Geometric Lens
- Heating Efficiency Control



appleprobe

MyLabSeven offers a wide range of iQ Probes. In addition to convex, linear and phased array, several special probes (such as endocavity, trans-esophageal, intraoperative, volumetric,...) can be connected.

MyLabSeven, thanks to four multi-size connectors, offers the compatibility with different type of probes. Examination can be comfortably performed, with the right tool and without any waste of time.



Wireless Ultrasound

MyLabSeven

- Extended export capability to PC (Windows®, Mac®) and mobile devices (tablets, smart-phones, etc ...)
- Easy networking, standard and wireless
- DICOM and IHE compliance

MyLabDesk³



The new app to visualize images and videos on mobile devices:



MyLab App



MyLabTMSeven

Productivity in Real-time

"Excellence is doing a common thing in an uncommon way"
Albert Einstein



Windows® is a registered trademark of Microsoft Corporation
 Mac® is a registered trademark of Apple Inc.



0051

Esaote S.p.A.

International Activities: Via di Caciolle, 15 50127 Florence, Italy, Tel. +39 055 4229 1, Fax +39 055 4229 208, international.sales@esaote.com
 Domestic Activities: Via A. Siffredi, 58 16153 Genoa, Italy, Tel. +39 010 6547 1, Fax +39 010 6547 275, info@esaote.com

FRANCE
 Esaote France S.A.R.L.
 ZA du Bel Air
 10, rue de Témara, 78105 Saint Germain en Laye
 Tel. +33 1 8204 8900, Fax +33 1 3061 7210
 info@esaote.fr

GERMANY
 Esaote Biomedica Deutschland GmbH
 Max-Planck-Strabe 27a
 50858 Köln
 Tel. +49 2234 688 5600, Fax +49 2234 967 9628
 info@esaote.de

SPAIN
 Esaote España S.A.
 Avda San Sebastian, s/n
 08960 Sant Just Desvern, Barcelona
 Tel. +34 93 473 2090, Fax +34 93 473 2042
 info@esaote.es

THE NETHERLANDS AND BELGIUM
 Esaote Benelux B.V.
 Philipsweg 1
 6227 AJ Maastricht
 Tel. +31 43 3824650, Fax +31 43 3824651
 benelux@esaote.nl

UK
 Esaote UK
 14, Cambridge Science Park
 Milton Road, Cambridge, CB4 0FQ
 Tel. + 44 1223 424499, Fax + 44 709 288 0281
 infoUK@esaote.com

NORTH AMERICA
 Esaote North America
 8000 Castleway Drive,
 Indianapolis, IN 46250
 Tel. +1 317 813 6000, Fax +1 317 813 6600
 inquire@esaoteusa.com

BRASIL
 Brasilian Direct Office
 Rua Tomas Carvalhal, 711
 04006-001 São Paulo SP
 Tel. +55 11 2589 0533 Fax +55 11 2589 0527
 leonardo.pili@esaote.com.br

ARGENTINA
 Esaote Latinoamérica S.A.
 San Martín 551, Cuerpo 'C', Piso 8, (C1004AAK)
 Buenos Aires
 Tel. +54 11 4326 1832, Fax: +54 11 4328 1245
 info@esaote.com.ar

INDIA
 Esaote Asia Pacific Diagnostic Private Limited
 DLF IT Park, A - 44 & 45, Tower- C, Ground Floor,
 Sector- 62, Noida, Uttar Pradesh, India
 Pin Code: 201 301
 Tel. +91 120 4732444, Fax +91 120 4750148
 info@esaote.in

HONG KONG AND FAR EAST
 Esaote China Ltd
 18/F, 135 Bonham Strand Trade Centre,
 135 Bonham Strand, Sheung Wan, Hong Kong
 Tel. +852 2545 8386, Fax +852 2543 3068
 esaote@esaotechina.com

CHINA
 Esaote Shenzhen Medical Equipment
 Room 2608, Tower B
 Beijing Global Trade Center
 36 North Third Ring Road East,
 Dongcheng District, 100013, Beijing
 Tel. +86 010 58257766, Fax +86 010 52257760

RUSSIAN FEDERATION AND CIS
 Esaote S.p.A.
 18 Leningradsky prospekt
 Off. 5 and 6, Moscow 125040
 Tel. +7 495 232 0205, Fax +7 495 232 1833
 esaotemoscow@yandex.ru

Specifications subject to change without notice.

Features, functions and accessories included in this brochure might be not yet released or approved in all the countries.

X4D, Elaxto, QAS, QIMT, QDP and XStrain 4D are not yet for sales in the USA.

The use of contrast agents in the USA is limited by FDA to left ventricle opacification and visualization of the left ventricular endocardial border.

